

**Modular Cooking Range Line
EVO700 Open Base Cupboard
1/2 Module**

ITEM # _____

MODEL # _____

NAME # _____

SIS # _____

AIA # _____

Main Features

- Unit can be easily installed below other 700 line top models.
- Unit delivered with 50 mm height adjustable feet in Stainless steel.
- Open base compartment for storage of pots, pans, sheet pans, etc.
- Doors with handles, drawers, heating kits and runners for GN containers can be ordered separately.

Construction

- Constructed in Stainless steel with Scotch Brite finish to meet the highest hygiene standards.

371112 (E7BAND00O0)

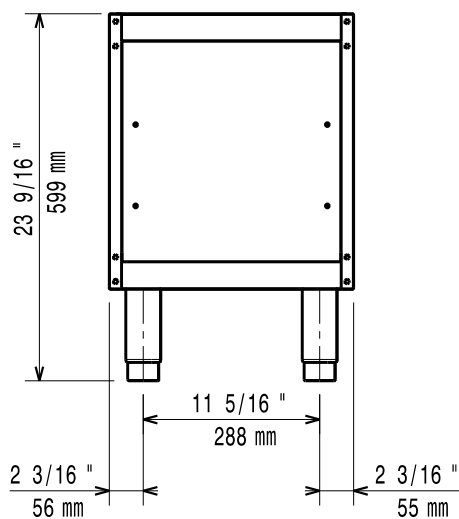
* NOT TRANSLATED *

APPROVAL: _____

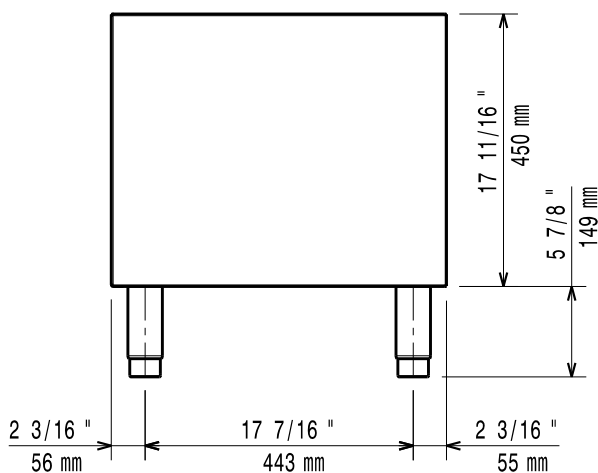
Optional Accessories

- 4 wheels, 2 swivelling with brake (EVO700/900). It is mandatory to install with base supports for feet/wheels. PNC 206135 ☐
- Flanged feet kit PNC 206136 ☐
- Frontal kicking strip for concrete installation, 400 mm PNC 206147 ☐
- Frontal kicking strip for concrete installation, 800 mm PNC 206148 ☐
- Frontal kicking strip for concrete installation, 1000 mm PNC 206150 ☐
- Frontal kicking strip for concrete installation, 1200 mm PNC 206151 ☐
- Frontal kicking strip for concrete installation, 1600 mm PNC 206152 ☐
- Frontal kicking strip, 400 mm PNC 206175 ☐
- Frontal kicking strip, 800 mm PNC 206176 ☐
- Frontal kicking strip, 1000 mm PNC 206177 ☐
- Frontal kicking strip, 1200 mm PNC 206178 ☐
- Frontal kicking strip, 1600 mm PNC 206179 ☐
- 4 feet for concrete installation (not for 900 line freestanding grill) PNC 206210 ☐
- 2 panels for service duct (single installation) PNC 206248 ☐
- Pair of side kicking strips PNC 206249 ☐
- 2 supports runners for open base for 4 GN1/1 PNC 206257 ☐
- Electric heating kit for cupboards PNC 206259 ☐
- Pair of side kicking strips (concrete installation) PNC 206265 ☐
- - NOT TRANSLATED - PNC 206328 ☐
- Door for open base cupboard PNC 206342 ☐
- 2 drawers for open base, height 100 mm PNC 206360 ☐
- Base support for feet or wheels - 400mm (EVO700/900) PNC 206366 ☐
- Base support for feet or wheels - 800mm (EVO700/900) PNC 206367 ☐
- Base support for feet or wheels - 1200mm (EVO700/EVO900) PNC 206368 ☐
- Base support for feet or wheels - 1600mm (EVO700/900) PNC 206369 ☐
- Base support for feet or wheels - 2000mm (EVO700/900) PNC 206370 ☐
- Rear paneling - 600mm (EVO700/900) PNC 206373 ☐
- Rear paneling - 800mm (EVO700/900) PNC 206374 ☐
- Rear paneling - 1000mm (EVO700/900) PNC 206375 ☐
- Rear paneling - 1200mm (EVO700/900) PNC 206376 ☐
- Base support for feet/wheels (600mm) PNC 206431 ☐

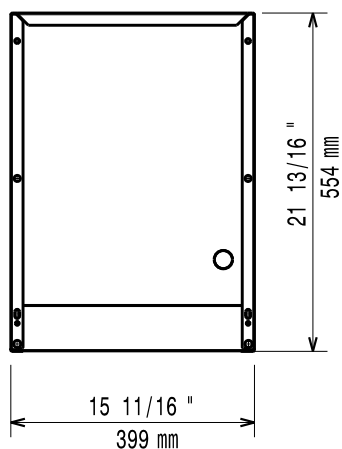
Front



Side



Top



Key Information:

External dimensions, Width:	
371112 (E7BAND0000)	400 mm
External dimensions, Depth:	550 mm
External dimensions, Height:	600 mm
Net weight:	10 kg